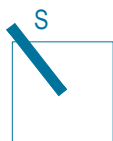
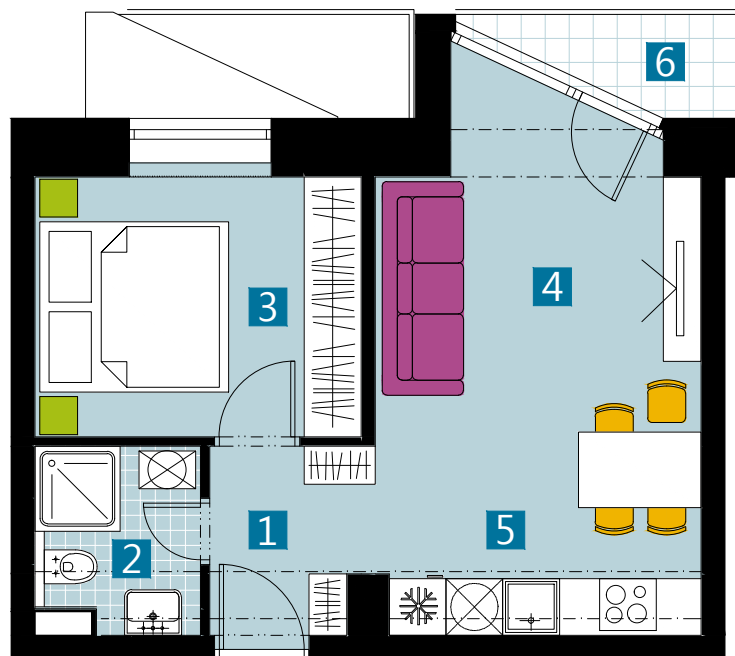




# KUBIK

BYTOVÝ DOM



0 1 2 3 4 5 M 1:80

I pôdorys je spracovaný na marketingové účely I zariadenie predmety a ich rozmiestnenie má len ilustračný charakter  
I floor plan is processed for marketing purposes I furniture and its placement is only for illustration

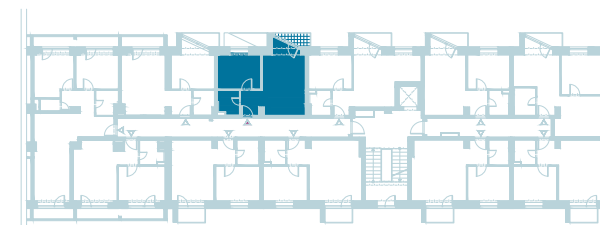
## BYT B18U / FLAT B18U

2 izbový byt / 2 rooms flat

1. vstupná predsieň	/ lobby	0 3, 6 1 m <sup>2</sup>
2. kúpeľňa	/ bathroom	0 3, 2 6 m <sup>2</sup>
3. izba	/ room	0 9, 7 1 m <sup>2</sup>
4. obývacia izba	/ living room	1 1, 8 9 m <sup>2</sup>
5. kuchyňa	/ kitchen	0 6, 8 0 m <sup>2</sup>

6. balkón	/ balcony	0 2, 4 1 m <sup>2</sup>
-----------	-----------	-------------------------

**CELKOVÁ PLOCHA / TOTAL 35,27 m<sup>2</sup>**



v chod B / entrance B

schéma pôdorysu 3. NP  
/ scheme of the third floor

vigroup

Dorastenecká 46, 831 07 Bratislava  
[www.vigroup.sk](http://www.vigroup.sk)