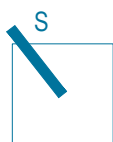
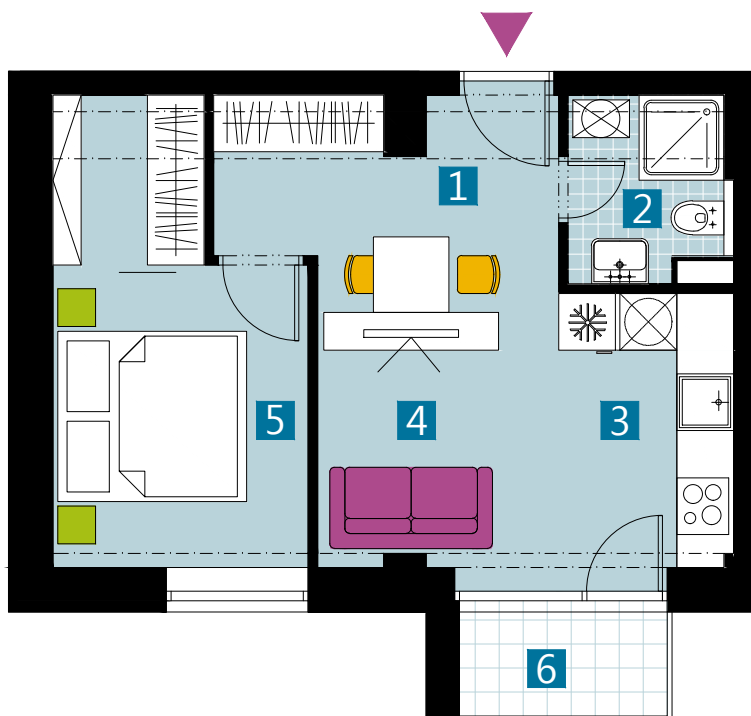


# KUBIK

BYTOVÝ DOM



0 1 2 3 4 5 M 1:80

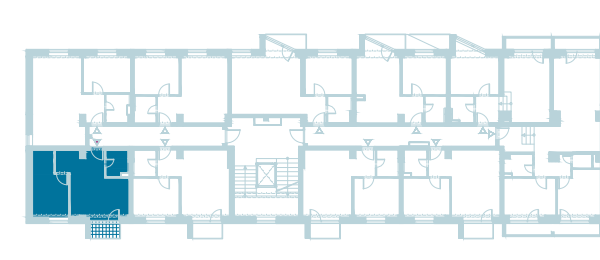
I pôdorys je spracovaný na marketingové účely I zariadenie predmety a ich rozmiestnenie má len ilustračný charakter  
I floor plan is processed for marketing purposes I furniture and its placement is only for illustration

## BYT A13U / FLAT A13U

2 izbový byt / 2 rooms flat

1. vstupná predsieň	/ lobby	0 5, 5 9 m <sup>2</sup>
2. kúpeľňa	/ bathroom	0 3, 1 6 m <sup>2</sup>
3. kuchyňa	/ kitchen	0 5, 6 4 m <sup>2</sup>
4. obývacia izba	/ living room	0 9, 2 6 m <sup>2</sup>
5. izba	/ room	1 1, 5 2 m <sup>2</sup>
6. balkón	/ balcony	0 2, 6 8 m <sup>2</sup>

**CELKOVÁ PLOCHA / TOTAL 35,17 m<sup>2</sup>**



v chod A / entrance A

schéma pôdorysu 3. NP  
/ scheme of the third floor

vigroup

Dorastenecká 46, 831 07 Bratislava  
[www.vigroup.sk](http://www.vigroup.sk)