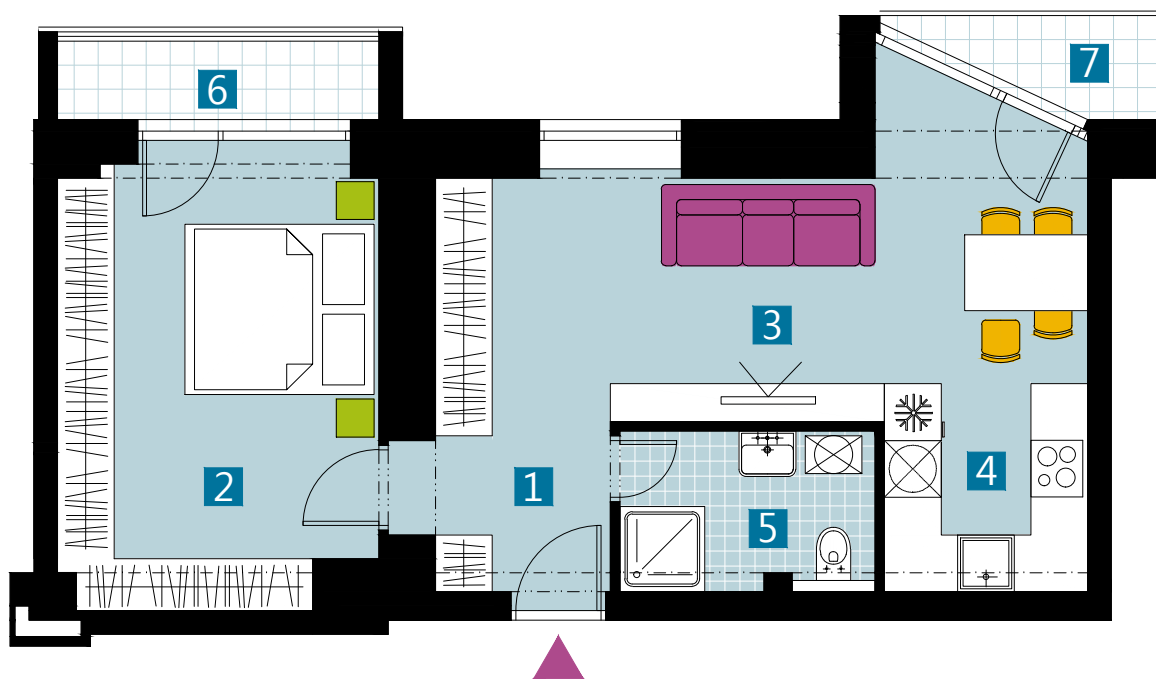




KUBIK

BYTOVÝ DOM



0 1 2 3 4 5 M 1:80

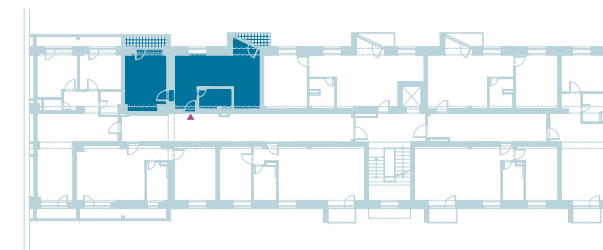
I pôdorys je spracovaný na marketingové účely I zariadenie predmety a ich rozmiestnenie má len ilustračný charakter
I floor plan is processed for marketing purposes I furniture and its placement is only for illustration

BYT B9U / FLAT B9U

2 izbový byt / 2 rooms flat

| | | |
|---------------------|---------------|-------------------------|
| 1. vstupná predsieň | / lobby | 0 4, 1 9 m ² |
| 2. izba | / room | 1 6, 0 5 m ² |
| 3. obývacia izba | / living room | 1 2, 2 5 m ² |
| 4. kuchyňa | / kitchen | 1 1, 5 9 m ² |
| 5. kúpeľňa | / bathroom | 0 4, 5 3 m ² |
| 6. balkón | / balcony | 0 3, 0 9 m ² |
| 7. balkón | / balcony | 0 2, 4 1 m ² |

CELKOVÁ PLOCHA / TOTAL 48,61 m²



v chod B / entrance B

schéma pôdorysu 2. NP
/ scheme of the second floor

vigroup

Dorastenecká 46, 831 07 Bratislava
www.vigroup.sk